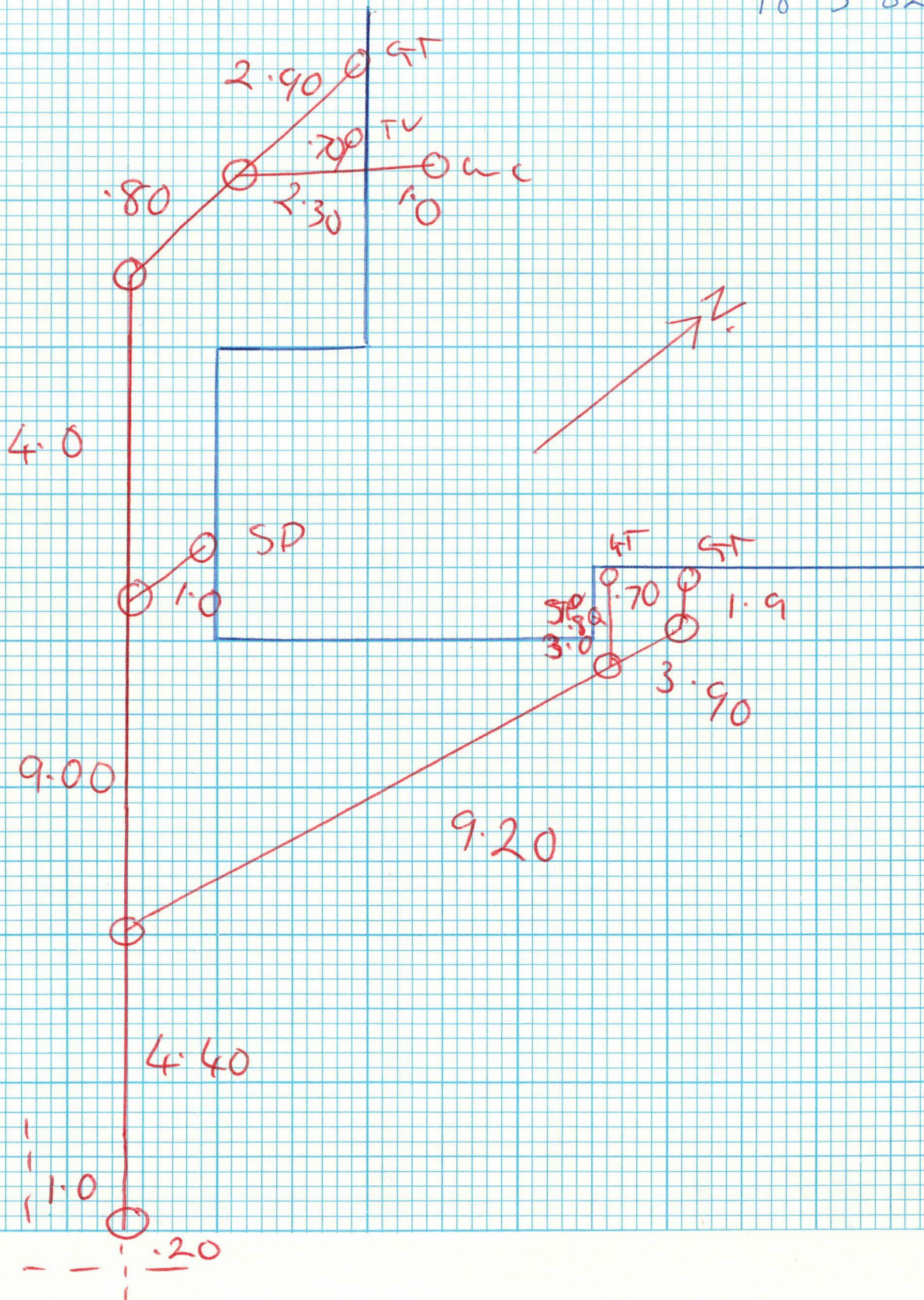


$$18-3-82$$

drainage new dwelling



0.45mm G.C. Iron roofing, on breather type building paper, on netting, on 75x50 purlins, on 'Pryde' nail plate trusses at 900mm centres

Pitch = 15°

Trusses fixed to plates with 'Pryde' truss saddles, or similar approved.

Engineer designed 'Pryde' nail plate trusses to loading requirements of NZS 4203.

Diamond 'Straightline' galv. spouting 75x40mm fascia 4.5mm Hardiflex

BEDRM. 2

'Luxalon' pre-enamelled horizontal weatherboards
Breather type bldg. paper
100x50 wall framing (Studs at 400mm crs.)

75mm fibre glass

2.425 floor to ceiling
2.465 floor to btm. chord

Rake garage ceiling at W/H. door

Galv. flashing G.C. Iron

As above

Open perpend

Garage ceiling

150mm split block veneer
Breather type building paper
100x50 framing (Studs at 400 crs.)

75mm fibre glass

2.425 floor to ceiling

DINING

Open perpend

12mm rod 6mm ties at 600 crs
2-12mm rods

240

0.45mm galv. L.E. ridging

0.45mm G.C. Iron roofing, on breather type building paper, on netting, on 75x50 purlins, on 'Pryde' nail plate trusses at 900mm centres

Pitch = 15°

Engineer designed 'Pryde' nail plate trusses to loading requirements of NZS 4203.

100mm fibre glass

75x30 ceiling battens at 400 crs

BEDRM. 3

75mm fibre glass

2.465 floor to btm. chord
2.425 floor to ceiling

Diamond 'Straightline' galv. spouting 75x40mm fascia 4.5mm Hardiflex

Open perpend

75x50 dwangs at 600mm crs.
12.5mm Glib. Bd.

Open perpend

GARAGE

100mm conc. slab
668 HRC mesh
Hard fill

50mm upstand

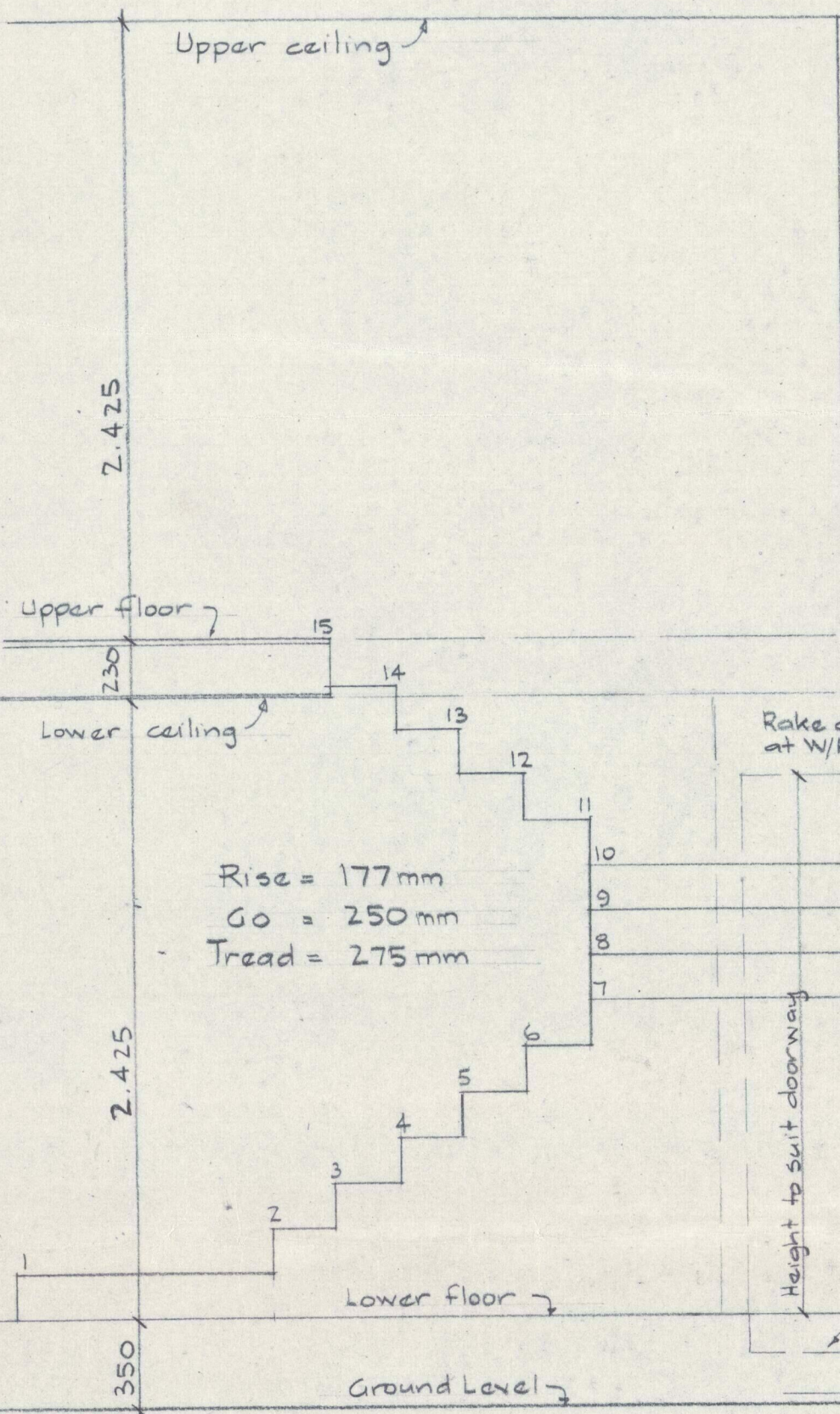
Open perpend

12mm rod

6mm ties at 600 crs

2-12mm rods

225



ROUGH STAIR SET-OUT SCALE = 1:25

TYPICAL SECTIONS

SCALE = 1:25

MR BURRIDGE